



Black Tie

Sample 214-022822-143

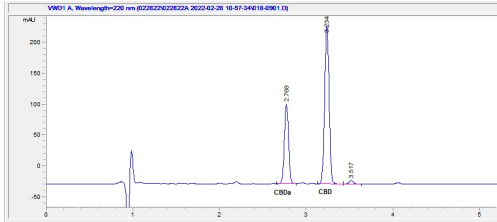
CBD Afghani Hash

Sample Submitted: 02-28-2022; Report Date: 03-01-2022

CBD Afghani Hash

Plant Material

Chromatogram



Cannabinoid Profile



Cannabinoid Profile by HPLC

0.00%
Calculated THC Yield

52.83%
Calculated CBD Yield

54.84%
Total Cannabinoids

Cannabinoid	% wt	mg/g
CBDA	16.31	163.1
CBD	38.53	385.3
Total Cannabinoids	54.84	548.4
Calculated THC Yield	0.00	0.00
Calculated CBD Yield	52.83	528.34

Calculated Maximum THC Yield = THC + 0.877 * THCA
Calculated Maximum CBD Yield = CBD + 0.877 * CBDA

Marin Analytics, LLC
250 Bel Marin Keys Blvd, Suite D4
Novato, CA 94949

415-936-6477 / sarabiancalana1@gmail.com

Sara Biancalana
Chief Scientist

This sample has been tested by Marin Analytics, LLC using valid testing methodologies and a quality system. Values reported relate only to the sample tested. Marin Analytics, LLC makes no claims as to the efficacy, safety or other risks associated with any detected or non-detected levels of any compounds reported herein. This Certificate shall not be reproduced except in full, without the written approval of Marin Analytics, LLC.